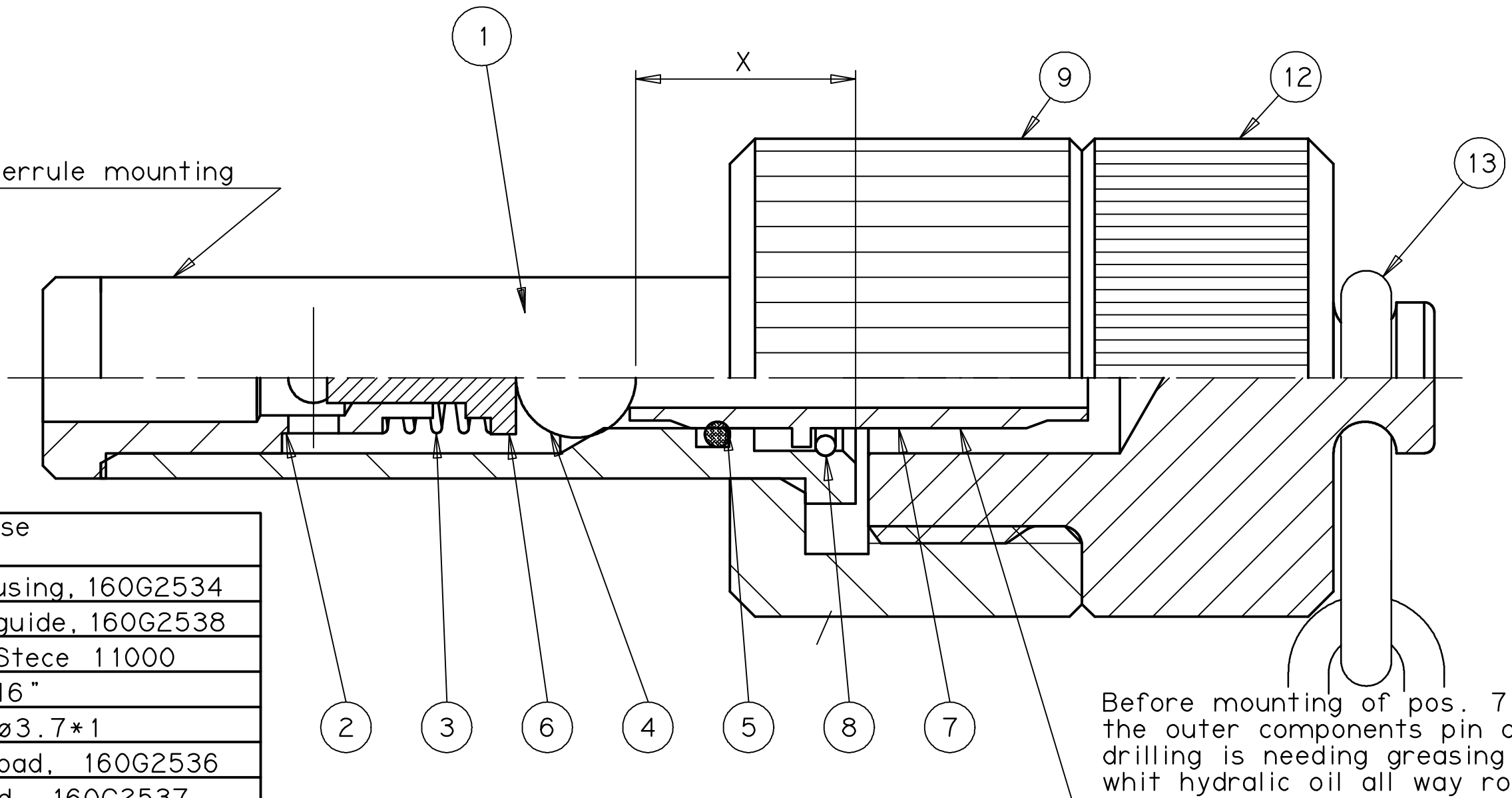


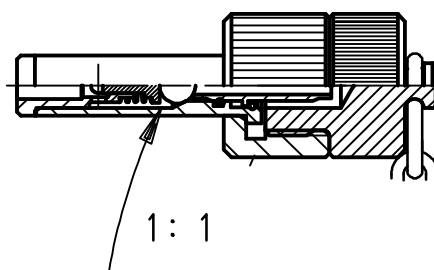
Union nut/Ferrule mounting



Pos	Beskrivelse
1	Valvehousing, 160G2534
2	Spring guide, 160G2538
3	Spring Stece 11000
4	Ball 3/16"
5	O-ring $\varnothing 3.7 \times 1$
6	Thrust pad, 160G2536
7	Push rod, 160G2537
8	Springring $\varnothing 6.2 / 0.8$
9	Cap 016E4691
10	Union nut $\varnothing 8$
11	Ferrule $\varnothing 8$
12	Cap Nut 160G2555
13	Chain

Before mounting of pos. 7 the outer components pin or drilling is needing greasing whit hydraulic oil all way round

Calculation of dimension (WORST CASE)  
 Ⓐ at ball aganst guide: X max. = 10.22  
 X in. = 9.82.  
 at ball aganst seat: see valvehousing.



Ⓐ Ring of chain must be placed here before mounting of union nut and Ferrule

MTR. ID-NO.		DESIGNATION/DIM.	NUMBER:	UNIT	MTR. QUALITY/SURFACE TREATMENT:										
ORDER NO.:		QUANTITY	THIS PRINT IS PROVIDED ON A RESTRICTED BASIS. THIS PRINT IS TO BE RETURNED UPON REQUEST. IT IS TO BE USED ONLY FOR THE PURPOSE FOR WHICH IT WAS EXPRESSLY PROVIDED AND IS NOT TO BE COPIED IN ANY MANNER. NOR INFORMATION TAKEN THERE FROM TO BE PASSED ON TO OTHERS WITHOUT THE EXPRESSED PERMISSION OF DAMCOS A/S. IT IS NOT TO BE USED IN ANY WAY DETRIMENTAL TO DAMCOS A/S												
IF NOTHING ELSE SPECIFIED (GENERAL INFORMATION):							SCALE:	DESIGN:	REV	SEE LOC.	ALTR NO.	DATE	SIGN	CHECK	APPR
NOMINEL DIM. OVER TO	TOLERANCE ISO 2768	SURFACE ROUGHNESS Ra =	FIRST ANGLE PROJECTION ISO METHOD E	5:1	REPLACES			0	B3	5521	011112	KBE	KBE		
0.5- 6	± 0.1								A	6698	071105	SJO	KBE		
6- 30	± 0.2														
30- 120	± 0.3														
120- 315	± 0.5														
315- 1000	± 0.8														
DIMENSIONS IN MM UNLESS OTHERWISE STATED			ID-NO:	TOTAL WEIGHT:			KG								
		DESCRIPTION:			QUICK CONNECTION FEMALE										
PAGE /		DRWG. NO.			160G2281										