

Roxtec S frame



EN Roxtec S frame is a metal frame available with a single opening, or in combinations with several openings in width and/or height.

- For use with Group RM components
- Attachment by welding
- SE PPS accessory available for plastic pipe seals

CN Roxtec S 型框架为主要用于焊接安装的金属框架。提供单一开口，或在宽度方向和/或高度方向几个开口的组合。

- 适用于 RM 组件
- 焊接安装
- 提供塑料管线密封 (SE PPS) 附件

DE Der Roxtec S-Rahmen ist ein Metallrahmen. Erhältlich als Einzelrahmen mit nur einer Öffnung oder als Rahmenkombination in horizontaler und/oder vertikaler Anordnung.

- Zur Verwendung mit Komponenten der Gruppe RM
- Schweißmontage
- Kunststoffrohrdichtung (SE PPS) als Zubehör erhältlich

ES El marco S de Roxtec es un marco metálico de adhesión principalmente mediante soldadura. Disponible con una única abertura o en combinaciones con varias aberturas en anchura y/o altura.

- Uso con componentes del grupo RM
- Adhesión por soldadura
- Accesorio de sellado para tuberías de plástico (SE PPS) disponible

FR Le cadre S Roxtec est un cadre métallique disponible avec ouvertures uniques ou en association avec différentes largeurs et/ou hauteurs d'ouverture.

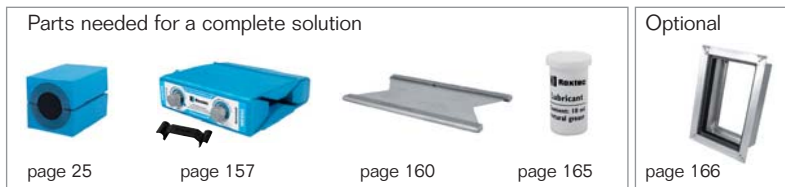
- Pour composants du Groupe RM
- Fixation par soudage
- Accessoire de soudure de tuyau plastique SE PPS disponible

S frames, primed, mild steel

S型框架, 优质低碳钢 | S-Rahmen, grundierter Baustahl | Marcos S en acero dulce imprimado |
Cadres S, acier doux peint



S 6x1 primed



See also Installation guidelines on page 189.

For information about other frame combinations that are not presented and for openable versions of this frame, please contact your local Roxtec supplier or e-mail: info@roxtec.com

RATINGS	Fire: A-Class, H-Class	Water pressure: 4 bar	Gas pressure: 2.5 bar
----------------	-------------------------------	------------------------------	------------------------------

CN DE ES FR EN	框架 Rahmen Marco Cadre Frame	框架 开孔数量 Aberturas del marco Nombre d'alvéoles Frame openings	密封空间 (毫米) Belegraum (mm) Espacio útil de sellado (mm) Espace de remplissage (mm) Packing space (mm)	外部尺寸 (D=60 毫米) HxW (毫米) HxW (英寸)		重量 (千克) (磅)		货号 Art.-Nr. N° art. N° d'article Art. No.
				HxW (毫米)	HxW (英寸)	(kg)	(lb)	
	S 1x1 primed	1	60 x 60	121 x 80	4.764 x 3.150	1.6	3.527	SS01000000112
	S 2x1 primed	1	60 x 120	121 x 141	4.764 x 5.551	2.2	4.938	S002000000112
	S 2x2 primed	2	60 x 120	121 x 271	4.764 x 10.669	3.9	8.488	S002000000212
	S 2x3 primed	3	60 x 120	121 x 402	4.764 x 15.827	5.5	12.037	S002000000312
	S 2x4 primed	4	60 x 120	121 x 532	4.764 x 20.945	7.1	15.609	S002000000412
	S 2x5 primed	5	60 x 120	121 x 663	4.764 x 26.102	8.7	19.158	S002000000512
	S 2x6 primed	6	60 x 120	121 x 793	4.764 x 31.220	10.3	22.707	S002000000612
	S 3x1 primed	1	120 x 60	180 x 80	7.087 x 3.150	2.3	5.071	SS03000000112
	S 4x1 primed	1	120 x 120	180 x 141	7.087 x 5.551	2.8	6.151	S004000000112
	S 4x2 primed	2	120 x 120	180 x 271	7.087 x 10.669	4.7	10.318	S004000000212
	S 4x3 primed	3	120 x 120	180 x 402	7.087 x 15.827	6.6	14.484	S004000000312
	S 4x4 primed	4	120 x 120	180 x 532	7.087 x 20.945	8.5	18.629	S004000000412
	S 4x5 primed	5	120 x 120	180 x 663	7.087 x 26.102	10.3	22.796	S004000000512
	S 4x6 primed	6	120 x 120	180 x 793	7.087 x 31.220	12.2	26.962	S004000000612
	S 4x7 primed	7	120 x 120	180 x 924	7.087 x 36.378	14.1	31.129	S004000000712
	S 4x8 primed	8	120 x 120	180 x 1054	7.087 x 41.496	16.0	35.296	S004000000812
	S 4x9 primed	9	120 x 120	180 x 1185	7.087 x 46.654	17.9	39.440	S004000000912

S frames, primed, mild steel

S型框架, 优质低碳钢 S-Rahmen, grundierter Baustahl Marcos S en acero dulce imprimado Cadres S, acier doux peint

CN	框架	密封空间 (毫米)	外部尺寸 (D=60 毫米)		重量		货号	
	开孔数量		HxW (毫米)	HxW (英寸)	(千克)	(磅)		
DE	Rahmen	Belegraum (mm)	Außenmaße (D=60 mm)		Gewicht		Art.-Nr.	
ES	Marco	Espacio útil de sellado (mm)	Dim. externas (D=60 mm)		Peso			
FR	Cadre	Espace de remplissage (mm)	Dim. extérieures (D=60 mm)		Poids		N° d'article	
EN	Frame	Packing space (mm)	External dimensions (D=60 mm)		Weight			
	Frame openings		HxW (mm)	HxW (in)	(kg)	(lb)	Art. No.	
	S 4+4x1 primed	2	120 x 120	349 x 141	13.740 x 5.551	5.0	11.067	S004400000112
	S 4+4x2 primed	4	120 x 120	359 x 271	14.134 x 10.669	9.5	20.878	S004400000212
	S 4+4x3 primed	6	120 x 120	359 x 402	14.134 x 15.827	13.5	29.321	S004400000312
	S 4+4x4 primed	8	120 x 120	359 x 532	14.134 x 20.945	17.1	37.743	S004400000412
	S 4+4x5 primed	10	120 x 120	359 x 663	14.134 x 26.102	21.0	46.186	S004400000512
	S 4+4x6 primed	12	120 x 120	359 x 793	14.134 x 31.220	24.8	54.630	S004400000612
	S 4+4x7 primed	14	120 x 120	359 x 924	14.134 x 36.378	28.6	63.096	S004400000712
	S 4+4x8 primed	16	120 x 120	359 x 1054	14.134 x 41.496	32.6	71.539	S004400000812
	S 4+4+4x1 primed	3	120 x 120	519 x 141	20.433 x 5.551	6.6	14.550	S004440000112
	S 4+4+4x2 primed	6	120 x 120	539 x 271	21.220 x 10.669	14.2	31.305	S004440000212
	S 4+4+4x3 primed	9	120 x 120	539 x 402	21.220 x 15.827	19.9	43.872	S004440000312
	S 4+4+4x4 primed	12	120 x 120	539 x 532	21.220 x 20.945	26.2	57.761	S004440000412
	S 4+4+4x5 primed	15	120 x 120	539 x 663	21.220 x 26.102	31.3	69.004	S004440000512
	S 4+4+4x6 primed	18	120 x 120	539 x 793	21.220 x 31.220	37.0	81.570	S004440000612
	S 5x1 primed	1	180 x 60	238 x 80	9.370 x 3.150	2.8	6.173	SS05000000112
	S 6x1 primed	1	180 x 120	238 x 141	9.370 x 5.551	3.3	7.363	S006000000112
	S 6x2 primed	2	180 x 120	238 x 271	9.370 x 10.669	5.5	12.147	S006000000212
	S 6x3 primed	3	180 x 120	238 x 402	9.370 x 15.827	7.7	16.909	S006000000312
	S 6x4 primed	4	180 x 120	238 x 532	9.370 x 20.945	9.8	21.671	S006000000412
	S 6x5 primed	5	180 x 120	238 x 663	9.370 x 26.102	12.0	26.455	S006000000512
	S 6x6 primed	6	180 x 120	238 x 793	9.370 x 31.220	14.2	31.217	S006000000612
	S 6x7 primed	7	180 x 120	238 x 924	9.370 x 36.378	16.3	35.979	S006000000712
	S 6x8 primed	8	180 x 120	238 x 1054	9.370 x 41.496	18.5	40.763	S006000000812
	S 6x9 primed	9	180 x 120	238 x 1185	9.370 x 46.654	20.7	45.525	S006000000912
	S 6+6x1 primed	2	180 x 120	466 x 141	18.346 x 5.551	6.1	13.492	S006600000112
	S 6+6x2 primed	4	180 x 120	476 x 271	18.740 x 10.669	11.1	24.537	S006600000212
	S 6+6x3 primed	6	180 x 120	476 x 402	18.740 x 15.827	15.5	34.171	S006600000312
	S 6+6x4 primed	8	180 x 120	476 x 532	18.740 x 20.945	19.9	43.827	S006600000412
	S 6+6x5 primed	10	180 x 120	476 x 663	18.740 x 26.102	24.3	53.506	S006600000512

S frames, primed, mild steel

S型框架, 优质低碳钢 S-Rahmen, grundierter Baustahl Marcos S en acero dulce imprimado Cadres S, acier doux peint

CN	框架	框架 开孔数量	密封空间 (毫米)	外部尺寸 (D=60 毫米)		重量		货号
	DE	Rahmen- öffnungen	Belegraum (mm)	HxW (毫米)	HxW (英寸)	(千克)	(磅)	
ES	Marco	Aberturas del marco	Espacio útil de sellado (mm)	Dim. externas (D=60 mm)		Peso		Nº art.
FR	Cadre	Nombre d'alvéoles	Espace de remplissage (mm)	Dim. extérieures (D=60 mm)		Poids		
EN	Frame	Frame openings	Packing space (mm)	External dimensions (D=60 mm)		Weight		Art. No.
				HxW (mm)	HxW (in)	(kg)	(lb)	
	S 6+6x6 primed	12	180 x 120	476 x 793	18.740 x 31.220	28.6	63.140	S006600000612
	S 6+6x7 primed	14	180 x 120	476 x 924	18.740 x 36.378	33.0	72.796	S006600000712
	S 6+6x8 primed	16	180 x 120	476 x 1054	18.740 x 41.496	37.4	82.474	S006600000812
	S 6+6x9 primed	18	180 x 120	476 x 1185	18.740 x 46.654	41.8	92.108	S006600000912
	S 6+6x10 primed	20	180 x 120	476 x 1315	18.740 x 51.772	46.2	101.764	S006600001012
	S 6+6+6x1 primed	3	180 x 120	694 x 141	27.323 x 5.551	8.2	18.078	S006660000112
	S 7x1 primed	1	240 x 60	298 x 80	11.732 x 3.150	3.3	7.363	SS07000000112
	S 8x1 primed	1	240 x 120	298 x 141	11.732 x 5.551	3.9	8.620	S008000000112
	S 8x2 primed	2	240 x 120	298 x 271	11.732 x 10.669	6.1	13.382	S008000000212
	S 8x3 primed	3	240 x 120	298 x 402	11.732 x 15.827	8.2	18.144	S008000000312
	S 8x4 primed	4	240 x 120	298 x 532	11.732 x 20.945	10.4	22.928	S008000000412
	S 8x5 primed	5	240 x 120	298 x 663	11.732 x 26.102	12.6	27.690	S008000000512
	S 8x6 primed	6	240 x 120	298 x 793	11.732 x 31.220	14.7	32.452	S008000000612
	S 8+8x1 primed	2	240 x 120	586 x 141	23.071 x 5.551	7.3	16.005	S008800000112
	S 8+8x2 primed	4	240 x 120	596 x 271	23.465 x 10.669	12.3	27.006	S008800000212
	S 8+8x3 primed	6	240 x 120	596 x 402	23.465 x 15.827	16.6	36.640	S008800000312
	S 8+8x4 primed	8	240 x 120	596 x 532	23.465 x 20.945	21.0	46.341	S008800000412
	S 8+8x5 primed	10	240 x 120	596 x 663	23.465 x 26.102	25.4	55.975	S008800000512
	S 8+8x6 primed	12	240 x 120	596 x 793	23.465 x 31.220	29.8	65.609	S008800000612
	S 8+8x7 primed	14	240 x 120	596 x 924	23.465 x 36.378	34.2	75.309	S008800000712
	S 8+8x8 primed	16	240 x 120	596 x 1054	23.465 x 41.496	38.5	84.943	S008800000812
	S 8+8x9 primed	18	240 x 120	596 x 1185	23.465 x 46.654	42.9	94.577	S008800000912
	S 8+8x10 primed	20	240 x 120	596 x 1315	23.465 x 51.772	47.3	104.278	S008800001012
	S 8+8+8x1 primed	3	240 x 120	874 x 141	34.409 x 5.551	9.9	21.826	S008880000112

S frames, acid proof stainless steel

S型框架, 耐酸不锈钢 ▶ S-Rahmen, säurefester, rostfreier Edelstahl ▶ Marcos S en acero inoxidable a prueba de ácidos ▶ Cadres S, acier inoxydable résistant aux acides



S 6x1 AISI 316

Parts needed for a complete solution

Optional

See also Installation guidelines on page 189.

For information about other frame combinations that are not presented and for openable versions of this frame, please contact your local Roxtec supplier or e-mail: info@roxtec.com

RATINGS	Fire: A-Class, H-Class	Water pressure: 4 bar	Gas pressure: 2.5 bar
----------------	-------------------------------	------------------------------	------------------------------

	框架 开孔数量	密封空间 (毫米)	外部尺寸 (D=60 毫米)		重量		货号
			HxW (毫米)	HxW (英寸)	(千克)	(磅)	
CN	框架	开孔数量	外部尺寸 (D=60 毫米)		重量		货号
DE	Rahmen	Rahmenöffnungen	Außenmaße (D=60 mm)		Gewicht		Art.-Nr.
ES	Marco	Aberturas del marco	Dim. externas (D=60 mm)		Peso		Nº art.
FR	Cadre	Nombre d'alvéoles	Dim. extérieures (D=60 mm)		Poids		Nº d'article
EN	Frame	Frame openings	External dimensions (D=60 mm)		Weight		Art. No.
			HxW (mm)	HxW (in)	(kg)	(lb)	
	S 2x1 AISI 316	1	60 x 120	121 x 141	4.764 x 5.551	2.2 4.938	S002000000121
	S 2x2 AISI 316	2	60 x 120	121 x 271	4.764 x 10.669	3.9 8.488	S002000000221
	S 2x3 AISI 316	3	60 x 120	121 x 402	4.764 x 15.827	5.5 12.037	S002000000321
	S 2x4 AISI 316	4	60 x 120	121 x 532	4.764 x 20.945	7.1 15.609	S002000000421
	S 2x5 AISI 316	5	60 x 120	121 x 663	4.764 x 26.102	8.7 19.158	S002000000521
	S 2x6 AISI 316	6	60 x 120	121 x 793	4.764 x 31.220	10.3 22.707	S002000000621
	S 4x1 AISI 316	1	120 x 120	180 x 141	7.087 x 5.551	2.8 6.151	S004000000121
	S 4x2 AISI 316	2	120 x 120	180 x 271	7.087 x 10.669	4.7 10.318	S004000000221
	S 4x3 AISI 316	3	120 x 120	180 x 402	7.087 x 15.827	6.6 14.484	S004000000321
	S 4x4 AISI 316	4	120 x 120	180 x 532	7.087 x 20.945	8.5 18.629	S004000000421
	S 4x5 AISI 316	5	120 x 120	180 x 663	7.087 x 26.102	10.3 22.796	S004000000521
	S 4x6 AISI 316	6	120 x 120	180 x 793	7.087 x 31.220	12.2 26.962	S004000000621
	S 4+4x1 AISI 316	2	120 x 120	349 x 141	13.740 x 5.551	5.0 11.067	S004400000121
	S 4+4+4x1 AISI 316	3	120 x 120	519 x 141	20.433 x 5.551	6.6 14.550	S004440000121
	S 6x1 AISI 316	1	180 x 120	238 x 141	9.370 x 5.551	3.3 7.363	S006000000121
	S 6x2 AISI 316	2	180 x 120	238 x 271	9.370 x 10.669	5.5 12.147	S006000000221

S frames, acid proof stainless steel

S型框架，耐酸不锈钢 S-Rahmen, säurefester, rostfreier Edelstahl Marcos S en acero inoxidable a prueba de ácidos Cadres S, acier inoxydable résistant aux acides

CN	框架	框架开孔数量	密封空间 (毫米)	外部尺寸 (D=60 毫米)		重量		货号
	DE	Rahmenöffnungen	Belegraum (mm)	HxW (毫米)	HxW (英寸)	(千克)	(磅)	
ES	Marco	Aberturas del marco	Espacio útil de sellado (mm)	Dim. externas (D=60 mm)		Peso		Nº art.
	FR	Cadre	Espace de remplissage (mm)	HxW (mm)	HxW (pouces)	(kg)	(libra)	
EN	Frame	Frame openings	Packing space (mm)	External dimensions (D=60 mm)		Weight		Art. No.
				HxW (mm)	HxW (in)	(kg)	(lb)	
	S 6x3 AISI 316	3	180 x 120	238 x 402	9.370 x 15.827	7.7	16.909	S006000000321
	S 6x4 AISI 316	4	180 x 120	238 x 532	9.370 x 20.945	9.8	21.671	S006000000421
	S 6x5 AISI 316	5	180 x 120	238 x 663	9.370 x 26.102	12.0	26.455	S006000000521
	S 6x6 AISI 316	6	180 x 120	238 x 793	9.370 x 31.220	14.2	31.217	S006000000621
	S 6+6x1 AISI 316	2	180 x 120	466 x 141	18.346 x 5.551	6.1	13.492	S006600000121
	S 6+6x2 AISI 316	4	180 x 120	476 x 271	18.740 x 10.669	11.1	24.537	S006600000221
	S 6+6x3 AISI 316	6	180 x 120	476 x 402	18.740 x 15.827	15.5	34.171	S006600000321
	S 6+6x4 AISI 316	8	180 x 120	476 x 532	18.740 x 20.945	19.9	43.872	S006600000421
	S 6+6x5 AISI 316	10	180 x 120	476 x 663	18.740 x 26.102	24.3	53.506	S006600000521
	S 6+6x6 AISI 316	12	180 x 120	476 x 793	18.740 x 31.220	28.6	63.140	S006600000621
	S 8x1 AISI 316	1	240 x 120	298 x 141	11.732 x 5.551	3.9	8.620	S008000000121
	S 8x2 AISI 316	2	240 x 120	298 x 271	11.732 x 10.669	6.1	13.382	S008000000221
	S 8x3 AISI 316	3	240 x 120	298 x 402	11.732 x 15.827	8.2	18.144	S008000000321
	S 8x4 AISI 316	4	240 x 120	298 x 532	11.732 x 20.945	10.4	22.928	S008000000421
	S 8x5 AISI 316	5	240 x 120	298 x 663	11.732 x 26.102	12.6	27.690	S008000000521
	S 8x6 AISI 316	6	240 x 120	298 x 793	11.732 x 31.220	14.7	32.452	S008000000621
	S 8+8x1 AISI 316	2	240 x 120	586 x 141	23.071 x 5.551	7.3	16.005	S008800000121
	S 8+8+8x1 AISI 316	3	240 x 120	874 x 141	34.409 x 5.551	9.9	21.826	S008880000121

S frames, aluminum

S型框架, 铝 | S-Rahmen, Aluminium | Marcos S en aluminio | Cadres S aluminium



S 6x1 ALU

Parts needed for a complete solution				Optional
				
page 25	page 157	page 160	page 165	page 166

See also Installation guidelines on page 189.

For information about other frame combinations that are not presented and for openable versions of this frame, please contact your local Roxtec supplier or e-mail: info@roxtec.com

RATINGS	Fire: A-Class, H-Class	Water pressure: 4 bar	Gas pressure: 2.5 bar
----------------	-------------------------------	------------------------------	------------------------------

CN	框架	框架开孔数量	密封空间 (毫米)	外部尺寸 (D=60 毫米)		重量		货号
	HxW (毫米)	HxW (英寸)	(千克)	(磅)				
DE	Rahmen	Rahmenöffnungen	Belegraum (mm)	Außenmaße (D=60 mm)		Gewicht		Art.-Nr.
ES	Marco	Aberturas del marco	Espacio útil de sellado (mm)	Dim. externas (D=60 mm)		Peso		Nº art.
FR	Cadre	Nombre d'alvéoles	Espace de remplissage (mm)	Dim. extérieures (D=60 mm)		Poids		Nº d'article
EN	Frame	Frame openings	Packing space (mm)	External dimensions (D=60 mm)		Weight		Art. No.
				HxW (mm)	HxW (in)	(kg)	(lb)	
	S 2x1 ALU	1	60 x 120	121 x 141	4.764 x 5.551	0.8	1.698	S00200000131
	S 2x2 ALU	2	60 x 120	121 x 271	4.764 x 10.669	1.3	2.910	S00200000231
	S 2x3 ALU	3	60 x 120	121 x 402	4.764 x 15.827	1.9	4.145	S00200000331
	S 2x4 ALU	4	60 x 120	121 x 532	4.764 x 20.945	2.4	5.357	S00200000431
	S 2x5 ALU	5	60 x 120	121 x 663	4.764 x 26.102	3.0	6.592	S00200000531
	S 2x6 ALU	6	60 x 120	121 x 793	4.764 x 31.220	3.5	7.804	S00200000631
	S 2+2x1 ALU	2	60 x 120	232 x 141	9.134 x 5.551	1.3	2.965	S00220000131
	S 2+2+2x1 ALU	3	60 x 120	343 x 141	13.504 x 5.551	1.7	3.748	S002220000131
	S 4x1 ALU	1	120 x 120	180 x 141	7.087 x 5.551	1.0	2.116	S004000000131
	S 4x2 ALU	2	120 x 120	180 x 271	7.087 x 10.669	1.6	3.549	S004000000231
	S 4x3 ALU	3	120 x 120	180 x 402	7.087 x 15.827	2.3	4.982	S004000000331
	S 4x4 ALU	4	120 x 120	180 x 532	7.087 x 20.945	2.9	6.415	S004000000431
	S 4x5 ALU	5	120 x 120	180 x 663	7.087 x 26.102	3.6	7.848	S004000000531
	S 4x6 ALU	6	120 x 120	180 x 793	7.087 x 31.220	4.2	9.281	S004000000631
	S 4+4x1 ALU	2	120 x 120	349 x 141	13.740 x 5.551	1.7	3.762	S004400000131
	S 4+4x2 ALU	4	120 x 120	359 x 271	14.134 x 10.669	3.2	7.099	S004400000231

S frames, aluminum

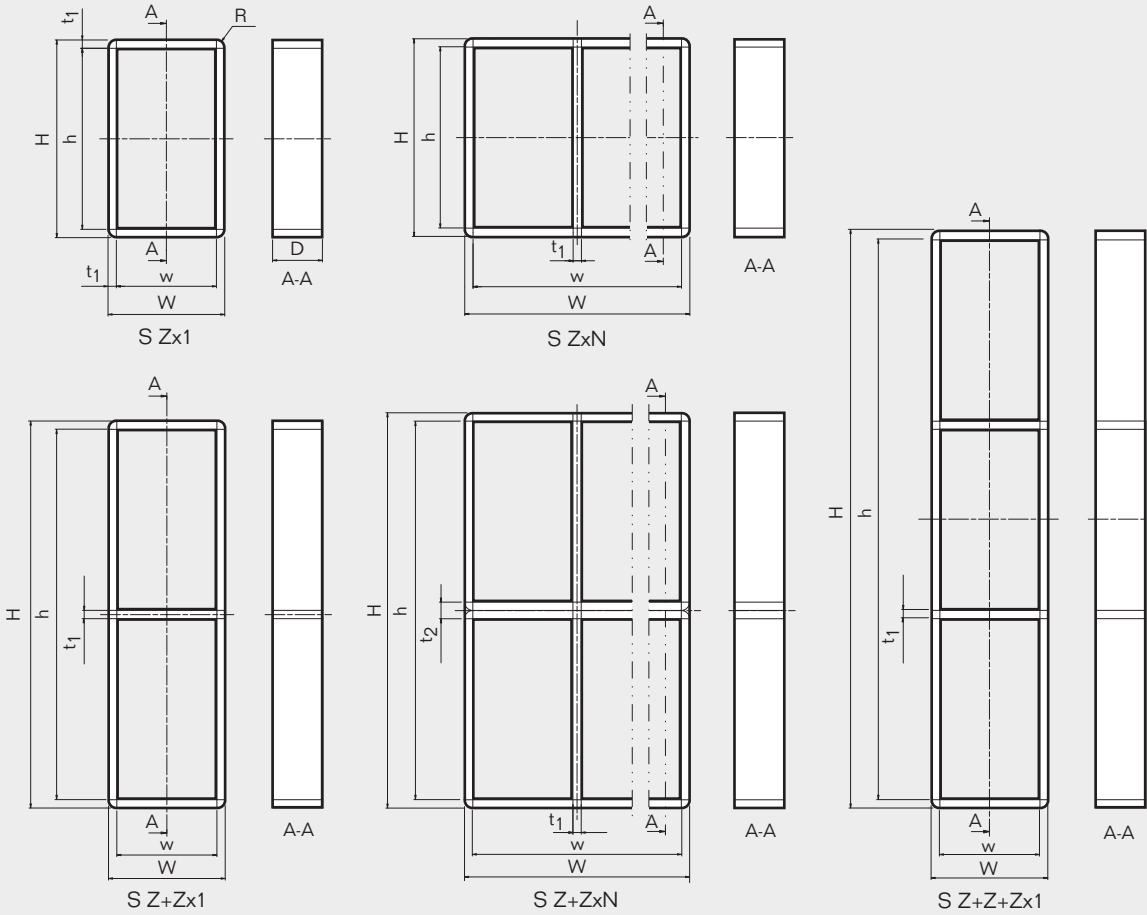
S型框架, 铝 | S-Rahmen, Aluminium | Marcos S en aluminio | Cadres S aluminium

CN	框架	框架 开孔数量	密封空间 (毫米)	外部尺寸 (D=60 毫米)		重量		货号
				HxW (毫米)	HxW (英寸)	(千克)	(磅)	
DE	Rahmen	Rahmen- öffnungen	Belegraum (mm)	Außenmaße (D=60 mm) HxW (mm) HxW (in.)		Gewicht (kg) (lb)		Art.-Nr.
ES	Marco	Aberturas del marco	Espacio útil de sellado (mm)	Dim. externas (D=60 mm) HxW (mm) HxW (pulgadas)		Peso (kg) (libra)		Nº art.
FR	Cadre	Nombre d'alvéoles	Espace de remplissage (mm)	Dim. extérieures (D=60 mm) HxW (mm) HxW (pouces)		Poids (kg) (lb)		Nº d'article
EN	Frame	Frame openings	Packing space (mm)	External dimensions (D=60 mm) HxW (mm) HxW (in)		Weight (kg) (lb)		Art. No.
	S 4+4x3 ALU	6	120 x 120	359 x 402	14.134 x 15.827	4.5	9.965	S004400000331
	S 4+4x4 ALU	8	120 x 120	359 x 532	14.134 x 20.495	5.8	12.831	S004400000431
	S 4+4+4x1 ALU	3	120 x 120	519 x 141	20.433 x 5.551	2.3	5.071	S004440000131
	S 6x1 ALU	1	180 x 120	238 x 141	9.370 x 5.551	1.2	2.535	S006000000131
	S 6x2 ALU	2	180 x 120	238 x 271	9.370 x 10.669	1.9	4.167	S006000000231
	S 6x3 ALU	3	180 x 120	238 x 402	9.370 x 15.827	2.6	5.820	S006000000331
	S 6x4 ALU	4	180 x 120	238 x 532	9.370 x 20.495	3.4	7.452	S006000000431
	S 6x5 ALU	5	180 x 120	238 x 663	9.370 x 26.102	4.1	9.083	S006000000531
	S 6x6 ALU	6	180 x 120	238 x 793	9.370 x 31.220	4.9	10.736	S006000000631
	S 6+6x1 ALU	2	180 x 120	466 x 141	18.346 x 5.551	2.1	4.630	S006600000131
	S 6+6x2 ALU	4	180 x 120	476 x 271	18.740 x 10.669	3.8	8.333	S006600000231
	S 6+6x3 ALU	6	180 x 120	476 x 402	18.740 x 15.827	5.3	11.640	S006600000331
	S 6+6x4 ALU	8	180 x 120	476 x 532	18.740 x 20.495	6.8	14.903	S006600000431
	S 6+6x5 ALU	10	180 x 120	476 x 663	18.740 x 26.102	8.2	18.166	S006600000531
	S 6+6x6 ALU	12	180 x 120	476 x 793	18.740 x 31.220	9.7	21.473	S006600000631
	S 6+6+6x1 ALU	3	180 x 120	694 x 141	27.323 x 5.551	2.8	6.173	S006660000131
	S 8x1 ALU	1	240 x 120	298 x 141	11.732 x 5.551	1.3	2.954	S008000000131
	S 8x2 ALU	2	240 x 120	298 x 271	11.732 x 10.669	2.2	4.806	S008000000231
	S 8x3 ALU	3	240 x 120	298 x 402	11.732 x 15.872	3.0	6.658	S008000000331
	S 8x4 ALU	4	240 x 120	298 x 532	11.732 x 20.495	3.9	8.532	S008000000431
	S 8x5 ALU	5	240 x 120	298 x 663	11.732 x 26.102	4.7	10.385	S008000000531
	S 8x6 ALU	6	240 x 120	298 x 793	11.732 x 31.220	5.6	12.236	S008000000631
	S 8+8x1 ALU	2	240 x 120	586 x 141	23.071 x 5.551	2.5	5.467	S008800000131
	S 8+8+8x1 ALU	3	240 x 120	874 x 141	34.409 x 5.551	3.4	7.496	S008880000131

S frames, technical information

S型框架, 技术信息 | S-Rahmen, technische Daten | Marcos S, información técnica |
Cadres S, informations techniques

RECTANGULAR FRAMES



Pos	(mm)	(in)
h	H - 20	H - 0.787
w	W - 20	W - 0.787
D	60	2.362
t ₁	10	0.394
t ₂	20	0.787
R	R 10	R 0.394

Z = Frame size
N = Number of horizontal openings

Z = 框架型号
N = 水平方向的开孔数量

Z = Rahmengröße
N = Anzahl horizontaler Öffnungen

Z = Tamaño del marco
N = Número de aberturas en sentido horizontal

Z = Taille du cadre
N = Nombre d'alvéoles horizontales

Note: All dimensions are nominal values
注意: 所有的尺寸都是参考值
Achtung: Alle angegebenen Maße sind Nominalwerte
Nota: Todas las dimensiones son valores nominales
N.B.: toutes les dimensions sont nominales

S frame, aperture dimensions for welded installations



S型框架，用于焊接安装的孔径

S-Rahmen, Öffnungsabmessungen (Ausbrand)

Marcos S, Dimensiones del hueco para instalaciones soldadas

Cadres S, dimensions d'ouverture pour des installations soudées

WELDING

CN	高度公差 ± 1 mm, ±0.039" 宽度方向上为一个 开孔 (毫米) (英寸)				宽度公差 ± 1 mm, ±0.039"									
	x1	x2	x3	x4	x5	x6	x7	x8	x9	x10				
DE	Höhentoleranz ± 1 mm, ±0.039" 1 Öffnung in der Breite (mm) (in.)				Breitentoleranz ± 1 mm, ±0.039" >1 Öffnung in der Breite (mm)/(in.)									
	x1	x2	x3	x4	x5	x6	x7	x8	x9	x10				
ES	Tolerancia en altura ± 1 mm, ±0.039" 1 apertura a lo ancho (mm) (pulgadas)				Tolerancia en anchura ± 1 mm, ±0.039" >1 apertura a lo ancho (mm)/(pulgadas)									
	x1	x2	x3	x4	x5	x6	x7	x8	x9	x10				
FR	Tolérance en hauteur ± 1 mm, ±0.039" 1 ouverture en largeur (mm) (pouces)				Tolérance en largeur ± 1 mm, ±0.039" >1 ouverture en largeur (mm)/(pouces)									
	x1	x2	x3	x4	x5	x6	x7	x8	x9	x10				
EN	Height tolerance ± 1 mm, ±0.039" 1 opening in width (mm) (in.)				Width tolerance ± 1 mm, ±0.039" >1 opening in width (mm) (in.)									
	x1	x2	x3	x4	x5	x6	x7	x8	x9	x10				
S 1	123	4.843			82									
					3.228									
S 2	123	4.843	123	4.409	143	273	404	534	665	795	926	1056	1187	1317
S 2+2	234	9.213	244	9.606	5.630	10.748	15.906	21.024	26.181	31.299	36.457	41.575	46.732	51.850
S 2+2+2	345	13.583	365	14.370										
S 3	182	7.165			82									
					3.228									
S 4	182	7.165	182	7.165	143	273	404	534	665	795	926	1056	1187	1317
S 4+4	351	13.819	361	14.213	5.630	10.748	15.906	21.024	26.181	31.299	36.457	41.575	46.732	51.850
S 4+4+4	521	20.512	541	21.299										
S 5	240	9.449			82									
					3.228									
S 6	240	9.449	240	9.449	143	273	404	534	665	795	926	1056	1187	1317
S 6+6	468	18.425	478	18.819	5.630	10.748	15.906	21.024	26.181	31.299	36.457	41.575	46.732	51.850
S 6+6+6	696	27.402	716	28.189										
S 8	300	11.811	300	11.811	143	273	404	534	665	795	926	1056	1187	1317
S 8+8	588	23.150	598	23.543	5.630	10.748	15.906	21.024	26.181	31.299	36.457	41.575	46.732	51.850
S 8+8+8	876	34.488	896	35.276										

Theoretically recommended dimensions / 理论参考尺寸 / Empfohlene Maße / Dimensiones teóricas recomendadas / Dimensions théoriques recommandées

S和SRC型框架, 焊接指南

S-, SRC-, SK- und SBTB-Rahmen, Richtlinien zum Einschweißen

Marco S, SRC, SK, SBTB, directrices de soldadura

Cadres S, SRC, SK, SBTB, instructions de soudage



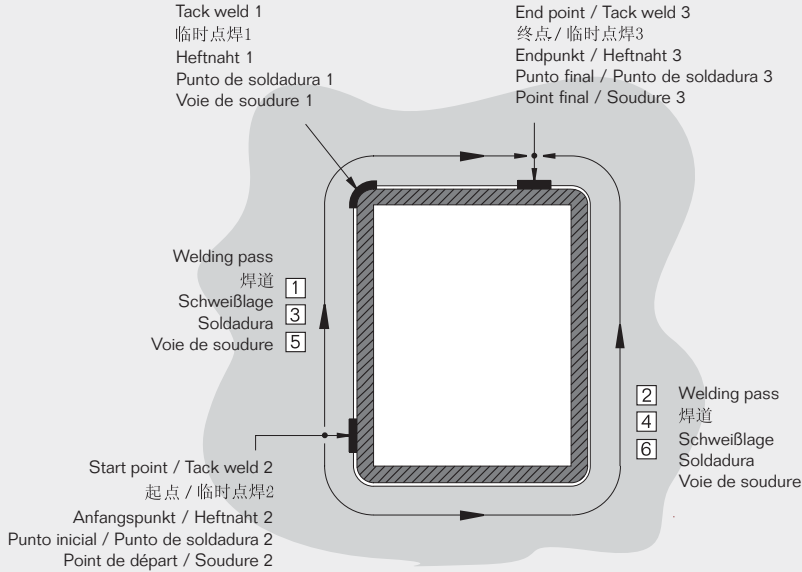
Welding sequence in bulkhead or deck

在舱壁或甲板上的焊接顺序

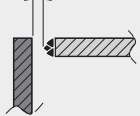
Schweißfolge in Schott oder Deck

Orden secuencial de soldadura en cubiertas y mamparos

Séquence de soudage pour cloison ou pont



1-2 mm, 0.039"-0.079"



Buttering should be performed on the deck or bulkhead. Important: The root gap must be as small as possible to keep the tolerance of the openings.

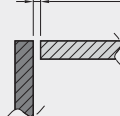
对焊应在甲板或舱壁上进行。
重要事项: 根部空隙必须尽可能细小, 以保持开孔公差。

Das Ein-schweißen sollte am Schott oder Deck vorgenommen werden. Achtung: Die Wurzelbreite muss so klein wie möglich sein damit die Toleranz der Öffnungen beibehalten wird.

Debe aplicarse un depósito preliminar en la cubierta o la mampara. Importante: El espacio de raíz debe ser lo más posible pequeño para mantener la tolerancia de las aperturas.

Le beurrage doit être fait sur le pont ou la cloison. Important: L'espace autorisé doit être aussi petit que possible afin de conserver les tolérances des ouvertures.

Max 2 mm, 0.079"



Max root gap for fillet joint.

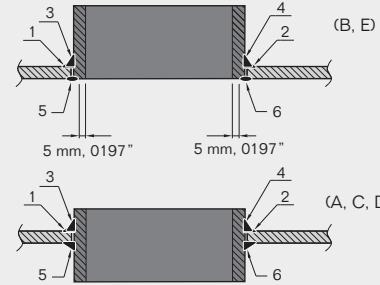
角焊缝的最大容许根部间隙

Max. Wurzelbreite der Kehlnaht.

Espacio de raíz máx. permitido por la junta de solapa

Espace max. autorisé pour le cordon de soudure

Min. space for stayplates
为隔层板预留的最小空间
Mind. Raum für Ankerscheiben
Espacio mín. para las placas de separación
Espace min. pour les plaques de maintien



The examples depict two passes fillet weld.

描述两道角焊缝的多个实例。

Die Beispiele stellen zwei Lagen einer Kehlnaht dar.

Los ejemplos muestran dos pasamuros con soldadura de solapa.

Les exemples décrivent deux voies pour le cordon de soudure.

Important: Weld pass no. 5-6 are not to be started until welding no. 1-4 are completed and the temperature of welding pass no. 1-4 has cooled down to min. pre-heat temperature.

重要事项: 在1~4焊道焊接完成且温度降至最低预热温度后才可开始焊接5~6焊道。

Wichtig: es darf nicht mit dem Schweißen der Schweißlagen Nr. 5-6 begonnen werden, bevor nicht die Schweißlagen Nr. 1-4 beendet und die Temperatur mind. auf die Vorwärmtemperatur abgekühlt ist.

Importante: Las soldaduras nº 5-6 no deben comenzarse hasta que no se hayan completado las soldaduras nº 1-4 y que la temperatura de las soldaduras no se haya enfriado hasta la temperatura de precalentamiento mínima.

Important: ne pas commencer les soudures 5-6 avant que celles numérotées 1 à 4 n'aient été définitivement terminées et leurs températures redescendues au minimum à la température de préchauffage

S, SRC, SK and SBTB frame, welding guidelines

S和SRC型框架，焊接指南

S-, SRC-, SK- und SBTB-Rahmen, Richtlinien zum Einschweißen

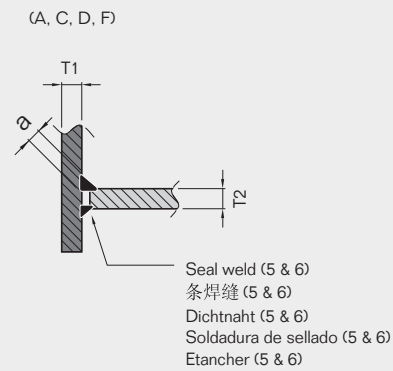
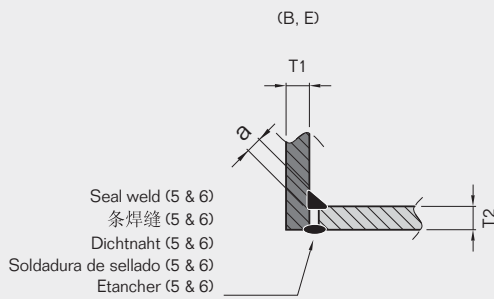
Marco S, SRC, SK, SBTB, directrices de soldadura

Cadres S, SRC, SK, SBTB, instructions de soudage



Fillet weld / 角焊缝 / Kehlnaht / Soldadura en ángulo / Tailles des filets – weld sizes / 焊缝尺寸 / Schweißnahtdicke / tamaños de soldadura / cordons de soudure

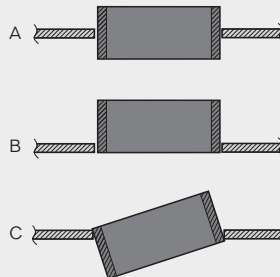
T1 (Frame / 型框架 / Rahmen / Marco / Cadre)	T2 (Bulkhead/Deck / 舱壁/甲板 / Schott/Deck / Mamparo / Cubierta / Cloison/Pont)	Fillet weld - weld sizes / 角焊缝-焊缝尺寸 / Kehlnaht - Schweißnahtdicke / Soldadura en ángulo - tamaños de soldadura / Tailles des filets/cordons de soudure	Welding pass / 焊道 / Schweißlage / Soldadura / Voie de soudure					
			1	2	3	4	5	6
10	>=8	a6	X	X	X	X	X	X
10	>=7	a4	X	X			X	X



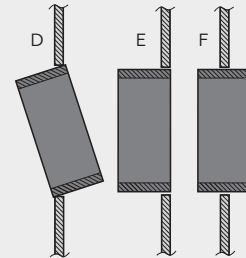
Possible positions

可安装的位置
Mögliche Positionen
Posiciones posibles
Positions possibles

Deck
甲板
Deck
Cubierta
Pont



Bulkhead
舱壁
Schott
Mamparo
Cloison



S和SRC型框架，焊接指南

S-, SRC-, SK- und SBTB-Rahmen, Richtlinien zum Einschweißen

Marco S, SRC, SK, SBTB, directrices de soldadura

Cadres S, SRC, SK, SBTB, instructions de soudage

**EN**

Mild steel welding, pre-heat temperature

Combined thickness (mm)/(in.) T1+T2	Minimum pre-heat temperature
<50/1.969	10° C, 50° F
>50/1.969<80/3.150	50° C, 122° F

Aluminum welding, pre-heat temperature

Combined thickness (mm)/(in.) T1+T2	Minimum pre-heat temperature
<25/0.984	10° C, 50° F
>25/0.984<50/1.969	50° C, 122° F

Stainless steel welding, no pre-heat

CN

低碳钢焊接，预热温度

组合厚度 (毫米)/(英寸) T1+T2	最低预热温度
<50/1.969	10° C, 50° F
>50/1.969<80/3.150	50° C, 122° F

铝材的焊接，预热温度

组合厚度 (毫米)/(英寸) T1+T2	最低预热温度
<25/0.984	10° C, 50° F
>25/0.984<50/1.969	50° C, 122° F

不锈钢焊接，无预热温度

DE

Schweißen von Baustahl, Vorwärmtemperatur

Kombinierte Dicke (mm)/(in.) T1+T2	Mindestvorwärmtemperatur
<50/1.969	10° C, 50° F
>50/1.969<80/3.150	50° C, 122° F

Schweißen von Aluminium, Vorwärmtemperatur

Kombinierte Dicke (mm)/(in.) T1+T2	Mindestvorwärmtemperatur
<25/0.984	10° C, 50° F
>25/0.984<50/1.969	50° C, 122° F

Schweißen von Edelstahl, ohne Vorwärmen

ES

Soldadura de acero dulce, temperatura de precalentamiento

Grosor combinado (mm)/(pulgadas) T1+T2	Temperatura de precalentamiento mínima
<50/1.969	10° C, 50° F
>50/1.969<80/3.150	50° C, 122° F

Soldadura de aluminio, temperatura de precalentamiento.

Grosor combinado (mm)/(pulgadas) T1+T2	Temperatura de precalentamiento mínima
<25/0.984	10° C, 50° F
>25/0.984<50/1.969	50° C, 122° F

Soldadura de acero inoxidable, sin precalentamiento

FR

Soudage de l'acier doux, température de préchauffage

Epaisseur cumulée (mm)/(pouces) T1+T2	Température minimale de préchauffage
<50/1.969	10° C, 50° F
>50/1.969<80/3.150	50° C, 122° F

Soudage de l'aluminium, température de préchauffage

Epaisseur cumulée (mm)/(pouces) T1+T2	Température minimale de préchauffage
<25/0.984	10° C, 50° F
>25/0.984<50/1.969	50° C, 122° F

Soudure inox, pas de préchauffage