

26.5 GHz – Straight bulkhead Cable Jacks (Female)

For semi-rigid cables

- Cable entry soldered
- Centre contact soldered

Description	Item no.	Packaging	Cable group	Assembly instruction	Plating body	Mounting hole	Fig.
24_SMA-50-2-100/111_NE	22648727	single	Y3, Y11, Y16	27055	gold	ML 35	1
24_SMA-50-3-100/111_NE	22648728	single	Y5, Y12, Y17	27055	gold	ML 35	2

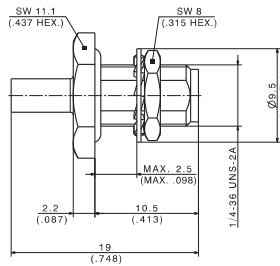


Fig. 1

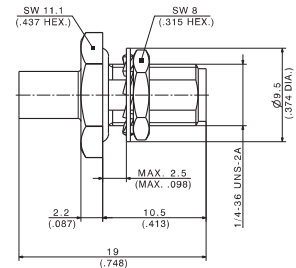


Fig. 2

Straight Panel Cable Jacks (Female)

For semi-rigid cables

- Cable entry soldered
- Centre contact soldered

Description	Item no.	Packaging	Cable group	Assembly instruction	Plating body	Mounting hole	Fig.
25_SMA-50-1-2/111_NE	22642390	single	Y2, Y15	9119	gold	ML 19	1
25_SMA-50-1-4/111_NE	22642391	single	Y2, Y15	9119	gold	-	2
25_SMA-50-1-4/111_NH	23017424	bulk 100 pcs.	Y2, Y15	9119	gold	-	2
25_SMA-50-2-15/111_NE ¹⁾	22544551	single	Y3, Y11, Y16	9057	gold	ML 19	1
25_SMA-50-2-25/111_NE ¹⁾	22641493	single	Y3, Y11, Y16	9057	gold	-	2

1) Centre contact not captivated.

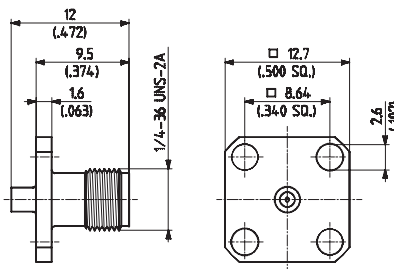


Fig. 1

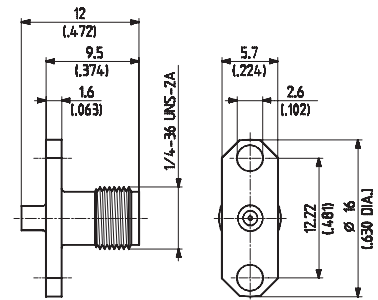


Fig. 2

Cable groups see page 34 ff.
Mounting holes see page 38.